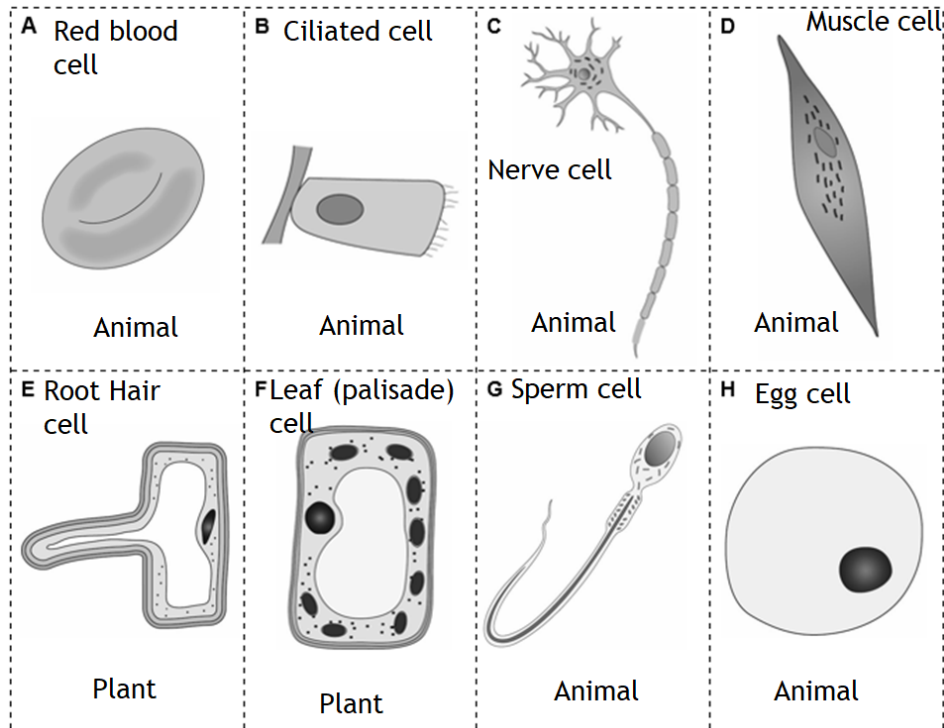


Y7 Easter Project 1

Choose any cell that we have studied this semester and make a model of that cell. Type "make a model cell" into your search engine to find lots of videos with hints and ideas to help you. Be creative, you could even make it edible!



Your model must be correctly labelled and contain a fact sheet to include:

- cell name
- which tissue it is part of
- 2 adaptations and the reason why that adaptation is useful to help it carry out its function
- where it fits into the organisation of the organism it is found in (i.e. a palisade cell is found in a leaf which makes up part of the stem system of a plant)

Here is an example to show you the expected level:

